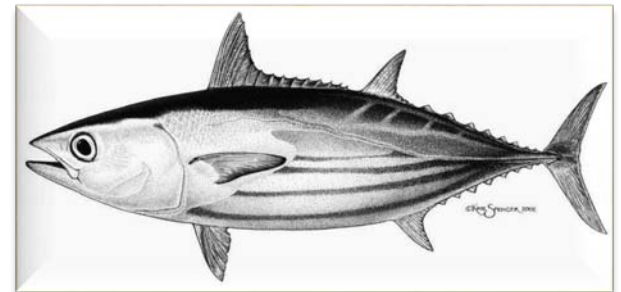


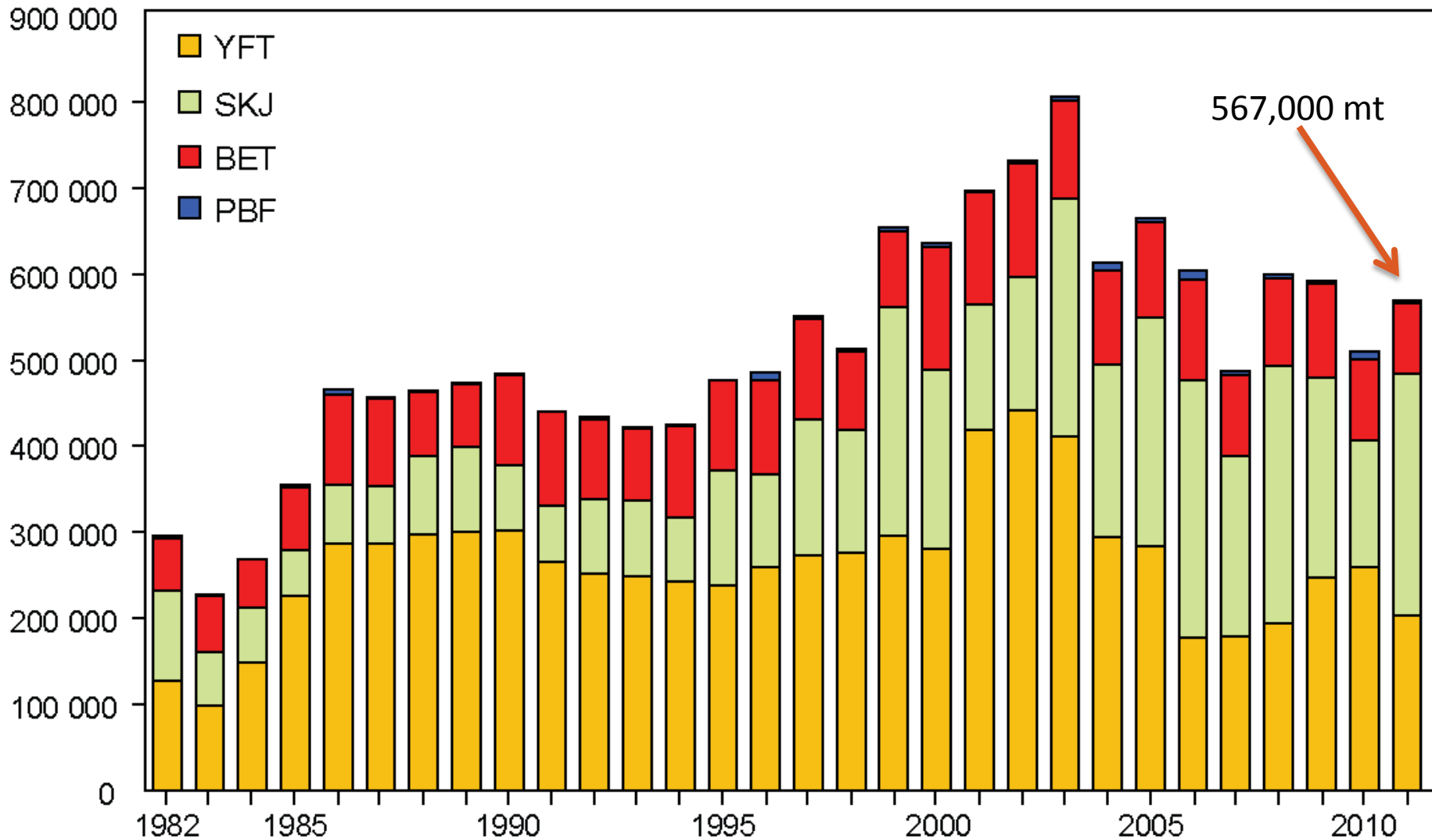


SUSTAINABILITY OF TUNA RESOURCES IN THE EPO

**TUNA MANAGEMENT AND
CONSERVATION MEASURES AND
THEIR EFFECTIVENESS**



PURSE SEINE EPO catches by species



BACKGROUND—MANAGEMENT

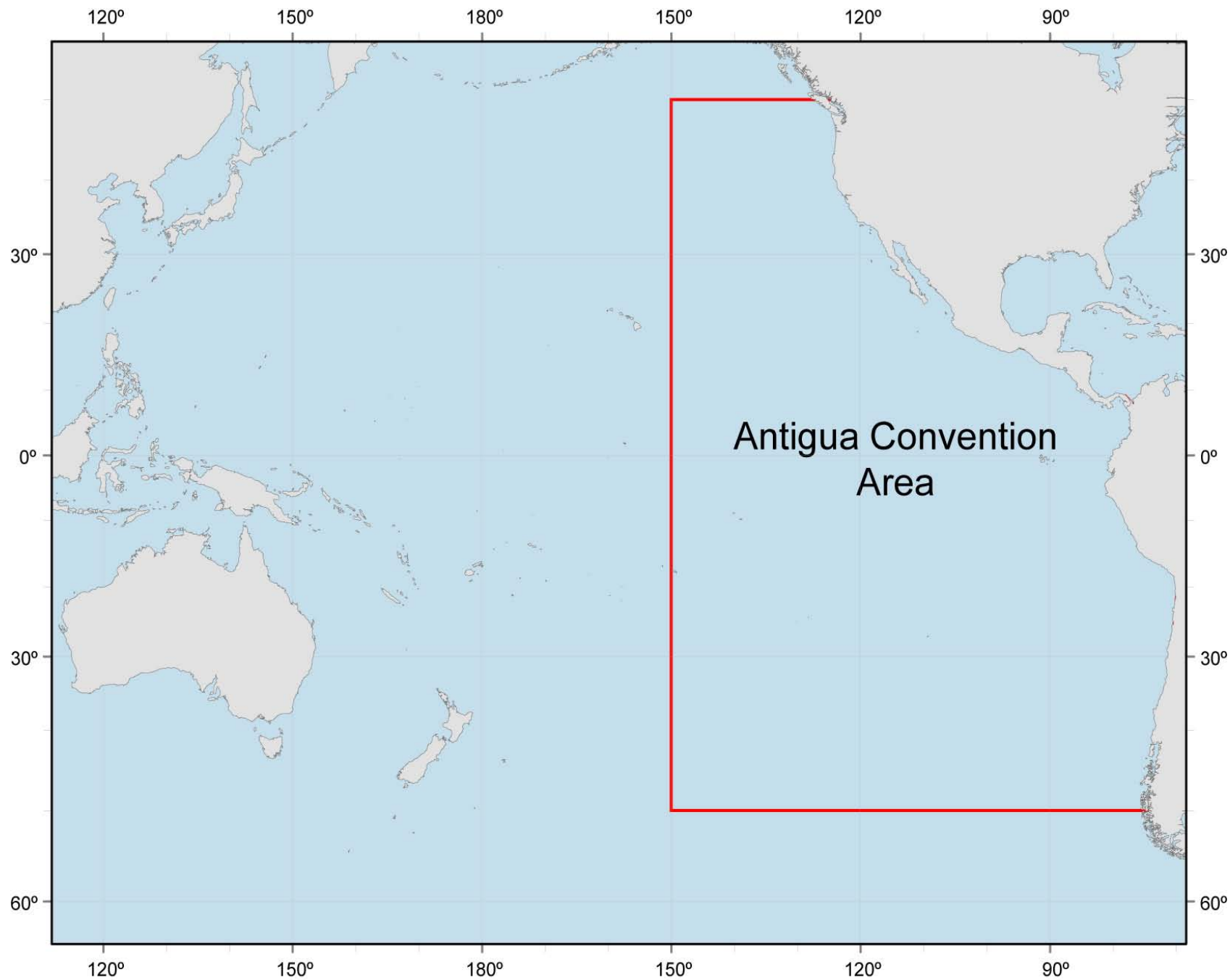


IATTC management responsibilities in EPO:

- Tuna and tuna-like species and billfishes (target species)
- Bycatch species (sharks and others pelagic species)

Management measures:

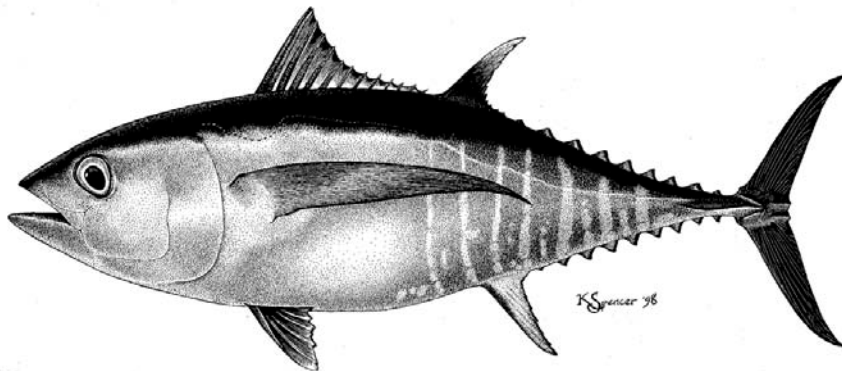
- Fishing effort reductions (temporal closures)
- Static Spatial closures (“el corralito”)



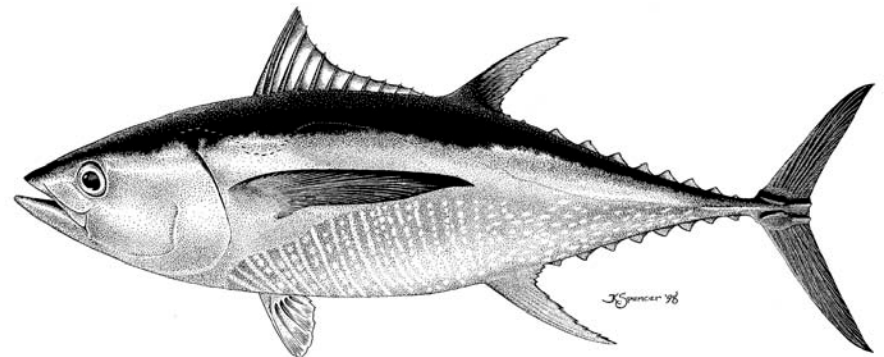
**MULTIANNUAL PROGRAM
FOR THE CONSERVATION
OF TUNA IN THE EASTERN
PACIFIC OCEAN IN 2011-
2013**



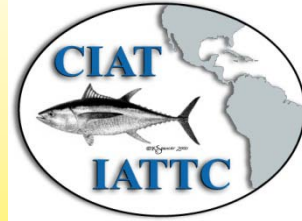
Bigeye Tuna



Yellowfin Tuna



RESOLUTION C-11-01



ON A MULTIANNUAL PROGRAM FOR THE CONSERVATION OF TUNA IN THE EPO IN 2011-2013 :

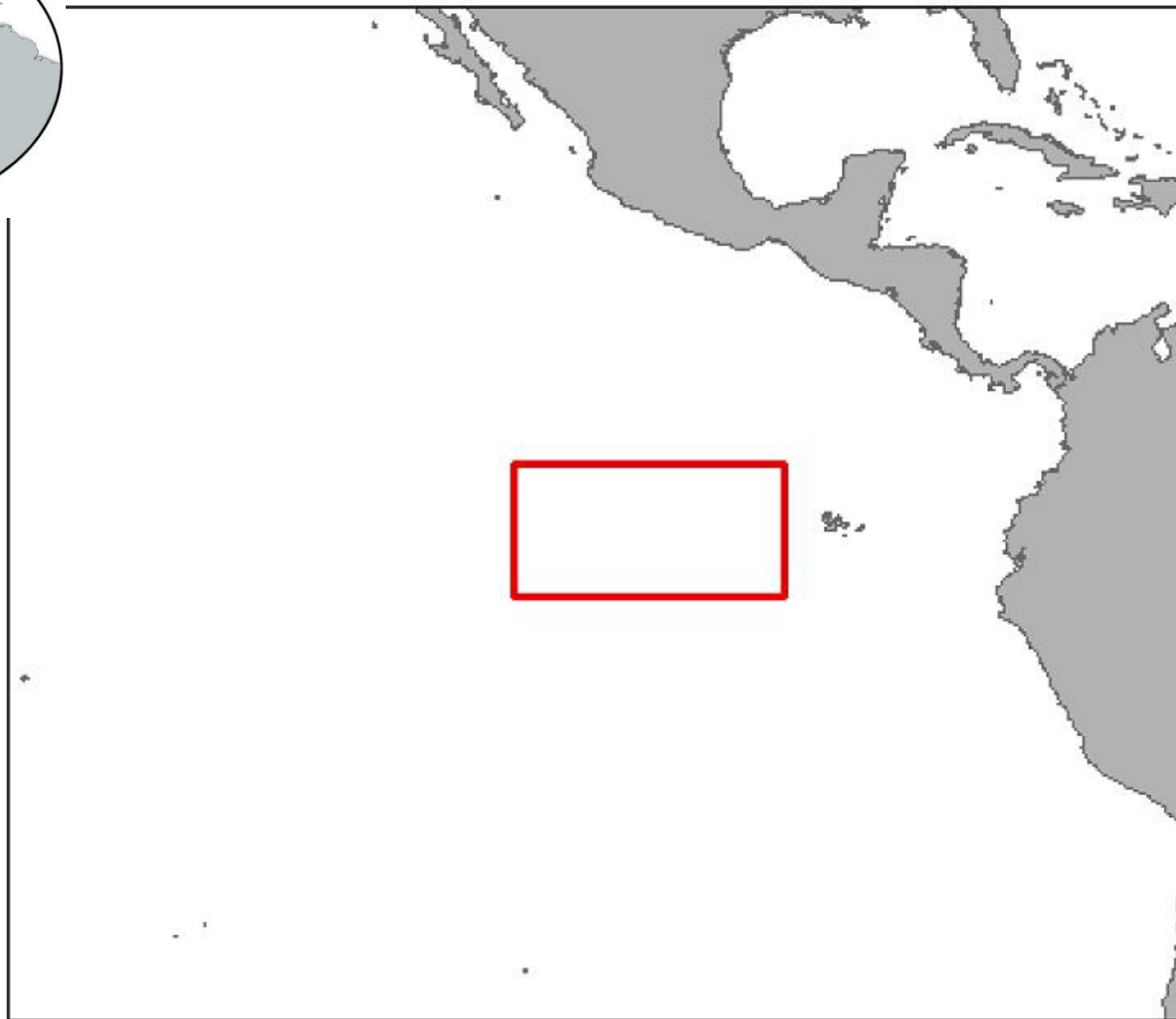
- All purse-seine vessels covered by these measures must stop fishing in the EPO for a period of 62 days in 2011, 2012, and in 2013.
- These closures shall be effected in one of two periods in each year .
- Full retention of tuna caught by purse seines

PURSE-SEINE VESSELS



IN THE YEARS 2011-2013 ALL PURSE-SEINE VESSELS OF CAPACITY CLASSES 4 TO 6 (MORE THAN 182 METRIC TONS CARRYING CAPACITY), THAT FISH FOR YELLOWFIN, BIGEYE AND SKIPJACK TUNAS IN THE EPO MUST STOP FISHING:

- From 29 July to 28 September, or
- From 18 November to 18 January.



Also, fishing of yellowfin, bigeye and skipjack tunas by purse-seine is prohibited in a high-seas area of the EPO between 96° and 110°W and from 4°N to 3°S, from 29 September to 29 October.

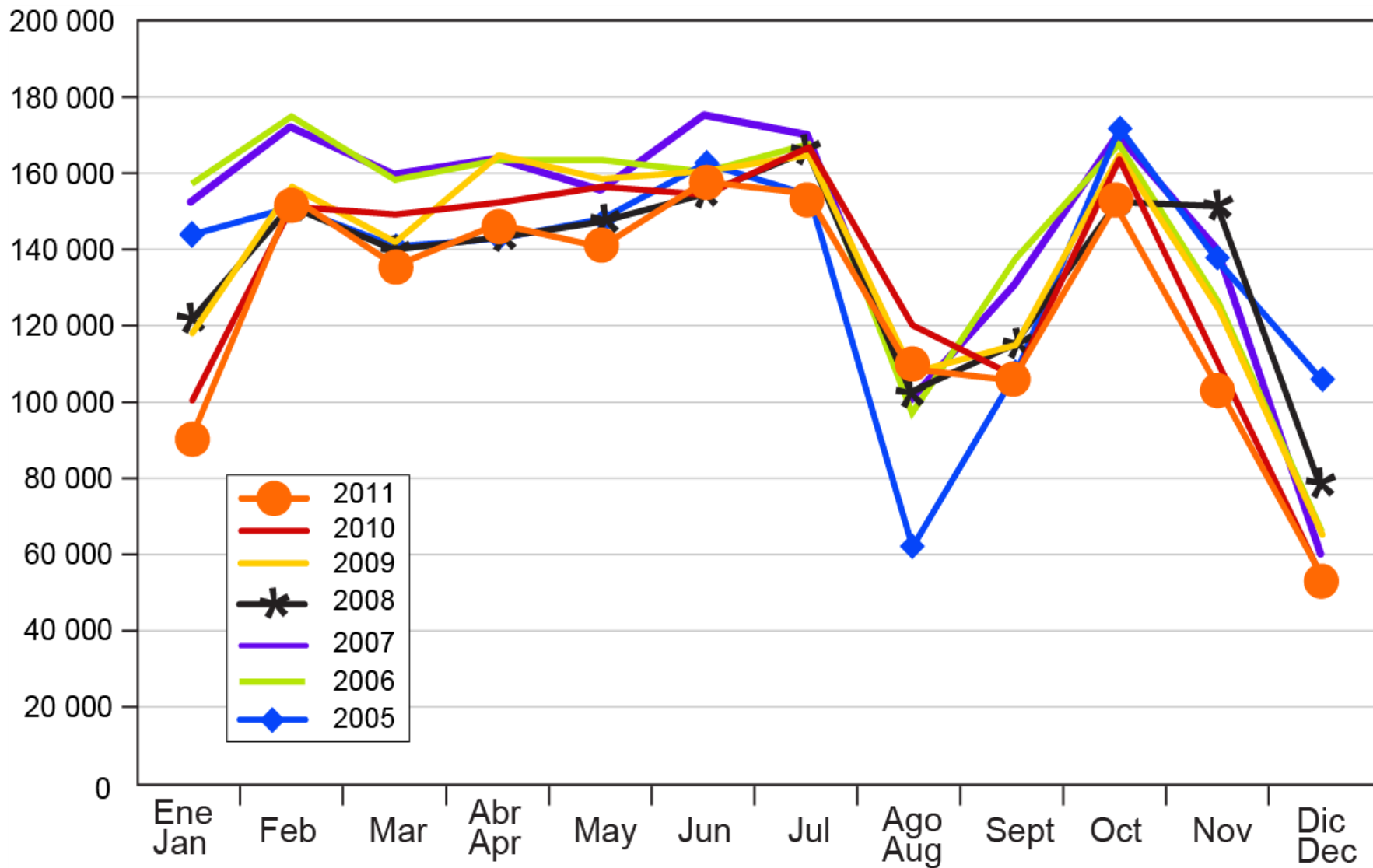
LONGLINE VESSELS



China, Japan, Korea, and Chinese Taipei undertake to ensure that the total annual catches of bigeye tuna by their longline vessels (vessels over 24 meters length overall) in the EPO during 2011-2013 do not exceed the following levels:

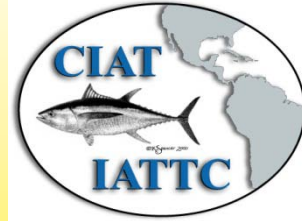
- China 2,507
- Japan 32,372
- Korea 11,947
- Chinese Taipei 7,555
- Others limit maximum of (2001 catch or 500 t)

Average capacity (cm) of purse-seine and pole-and-line vessels at sea in the EPO in 2005-2011 by month



RESOLUTION C-11-01

2011-2013



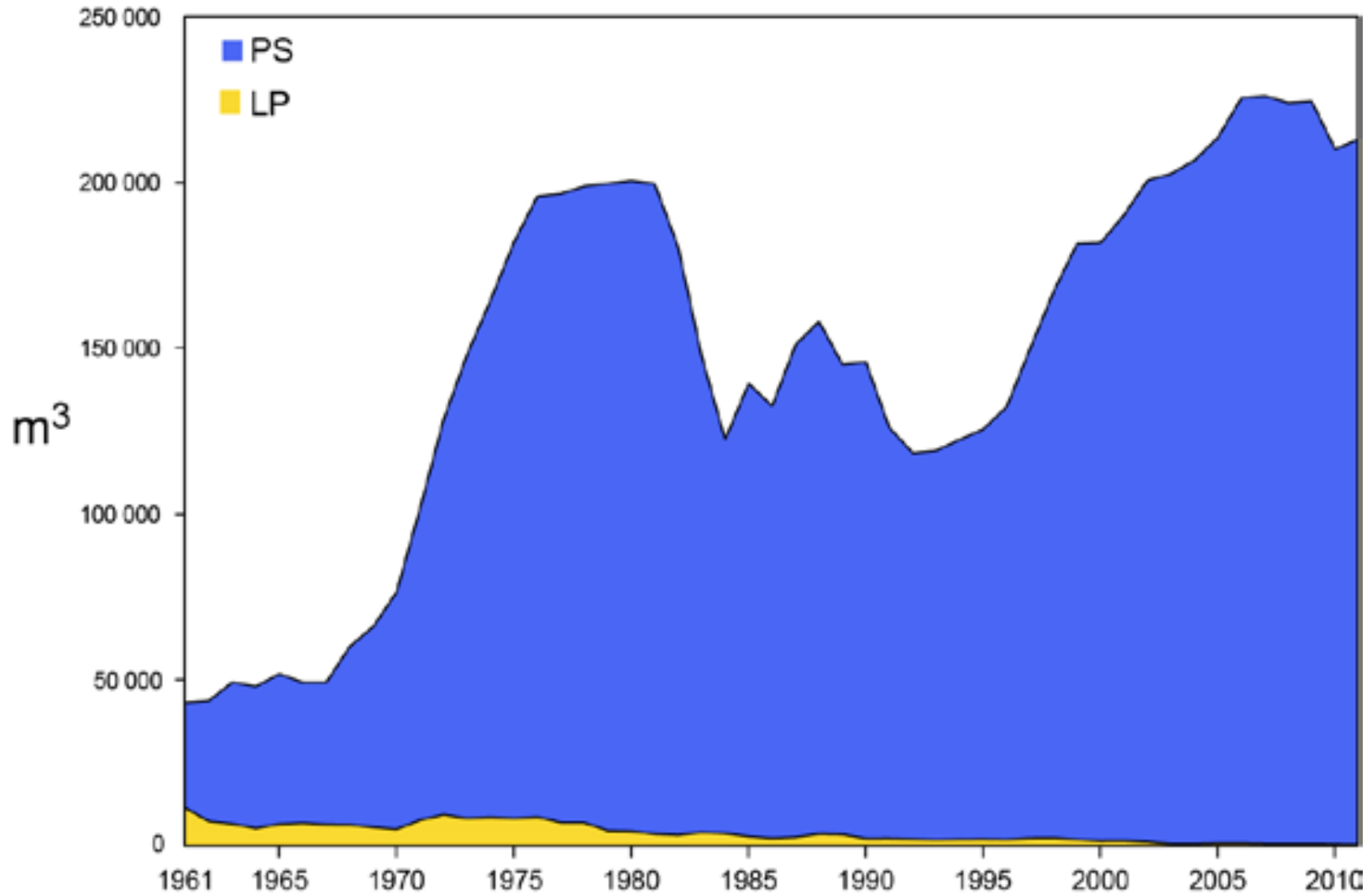
- In 2012 and 2013 the IATTC scientific staff will analyze the effects of the implementation of these measures, and will propose, if necessary, appropriate measures to be applied in future years.

RESULTS-2012 TUNA ASSESSMENT



- The results are **optimistic** for YFT. The recent fishing mortality rates are lower than those corresponding to the MSY, and the levels of spawning biomass are estimated to be at about that level. Increasing the average weight of the YFT caught could increase the MSY.
- But more **pessimistic** for BET. The 2010, assessment indicate a recovery trend subsequent to conservation measures initiated in 2004. However, an apparent decline of the spawning biomass has begun at the start of 2011 and recruitment estimates are predicted not to sustain the early observed rebuilding trend. The recent fishing mortality rates are estimated to be slightly above the level corresponding to MSY.

Carrying capacity, in cubic meters of well volume, of the purse-seine and pole-and-line fleets in the EPO, 1961-2011



NORTHERN ALBACORE TUNA(2005)



RESOLUTION C-05-02

- The total level of fishing effort for North Pacific albacore tuna in the EPO not be increased beyond current levels.
- The CPCs shall take necessary measures to ensure that the level of fishing effort by their vessels fishing for North Pacific albacore tuna is not increased;
- All CPCs shall report all catches of North Pacific albacore tuna by gear type to the IATTC every six months.