




Post tsunami Tuna trade/market in Japan

TUNA 2012

24 May 2012

Bangkok

- 
- My presentation is focused on
 - * Affect of tsunami to Fishing Industry
 - * Tuna trade/ market of Japan
 - * Importance of conservation of marine resources which human being need.



Damage at each Prefectures



Aomori Pref.
Loss of Fishing boats: 620 out of 10,555
Damage of Port: 18
Damage of Processing plant: 57 out of 119

Iwate Pref. Loss of Fishing boats:
6,254 out of 14,546
Damage of Port: 108 out of 111
Damage of Processing plant : 144 out of 178

Miyagi Pref Loss of Fishing boats:
12,023 out of 13,570
Damage of Port: All out of 142
Damage of Processing plant : 378 out of 439

Fukushima Pref Loss of Fishing boats: 873 out of 1,223
Damage of Port: All out of 10
Damage of Processing plant : 59 out of 135

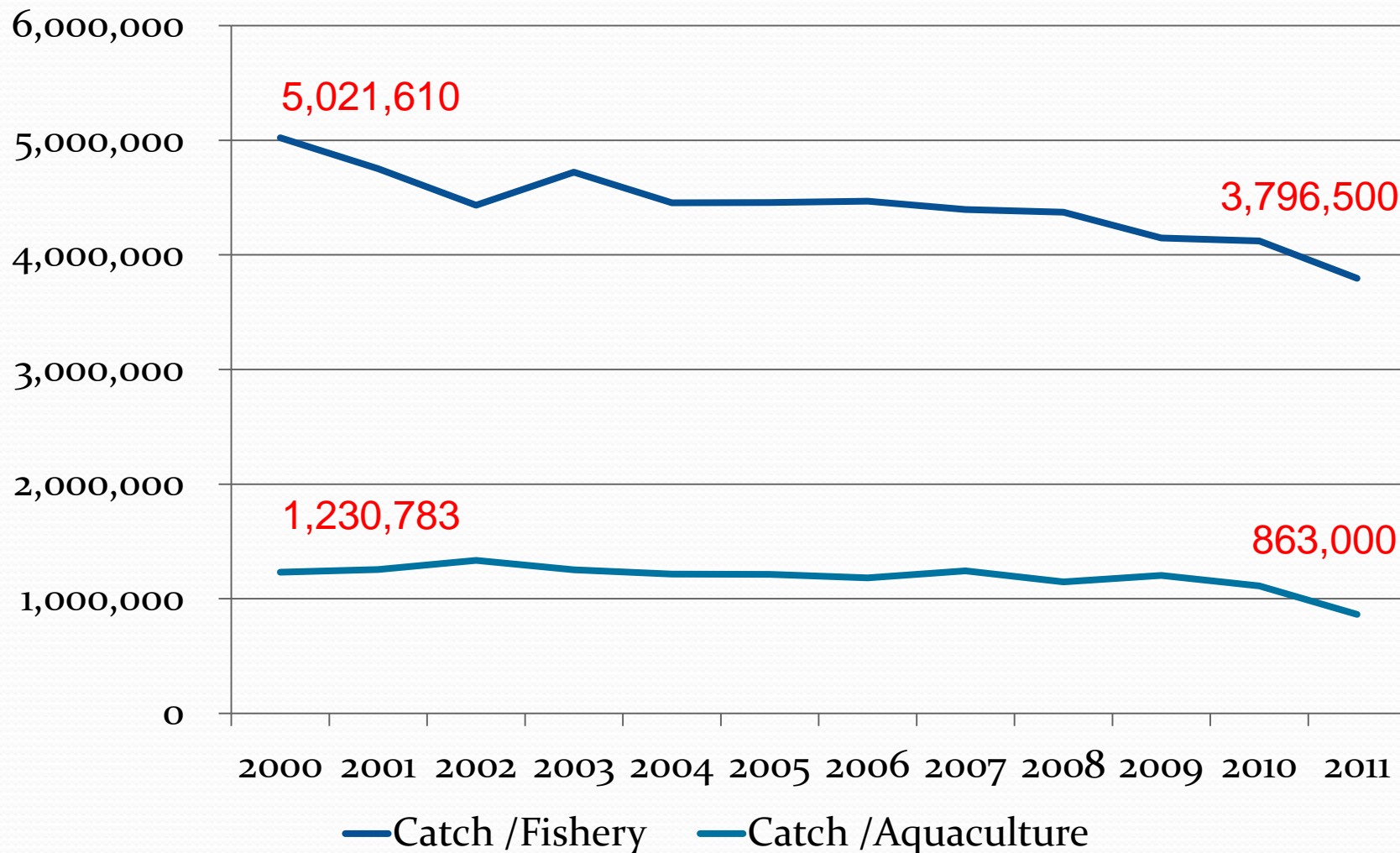
Rescue activities



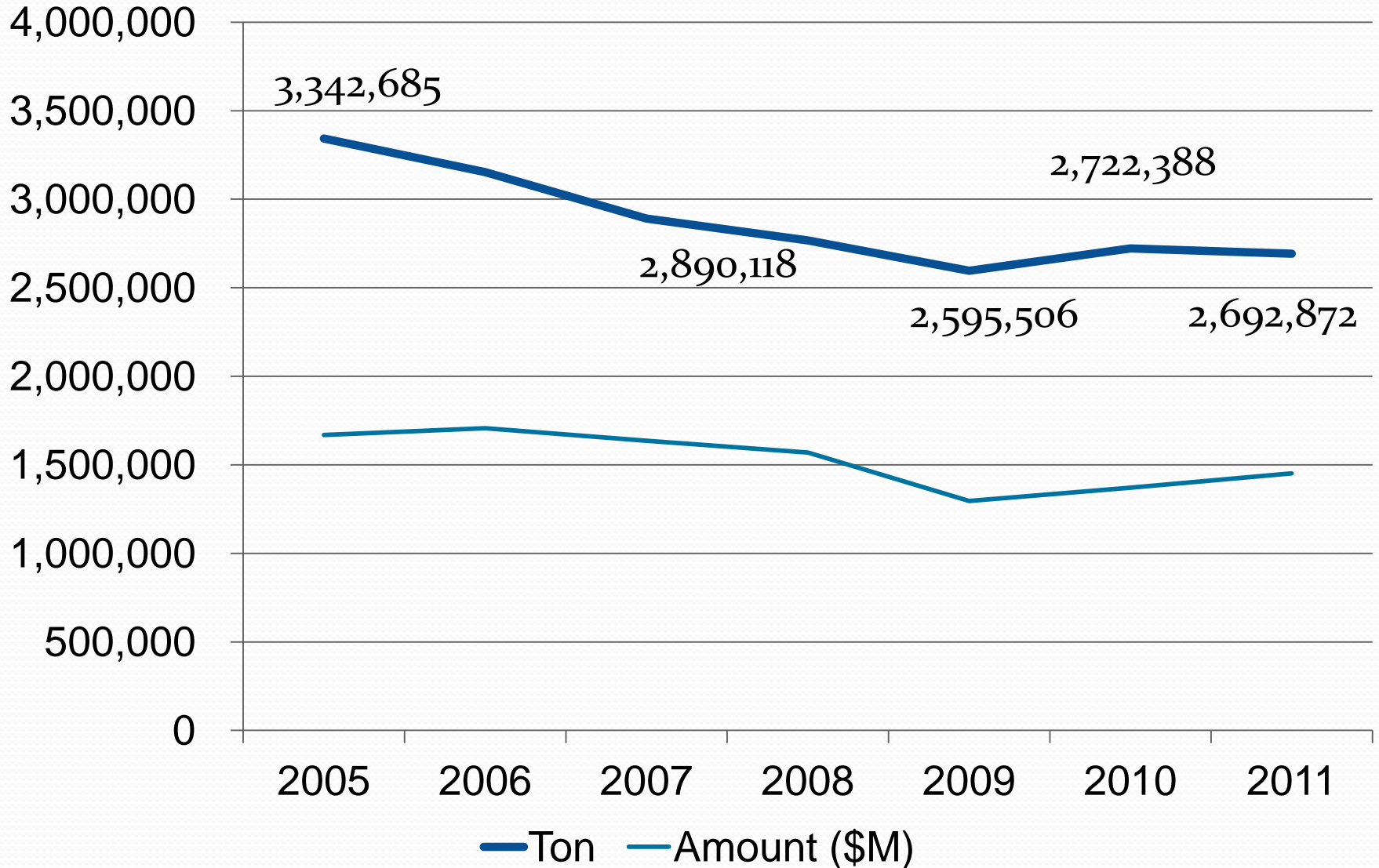
Capture of fisheries and aquaculture of

Japan

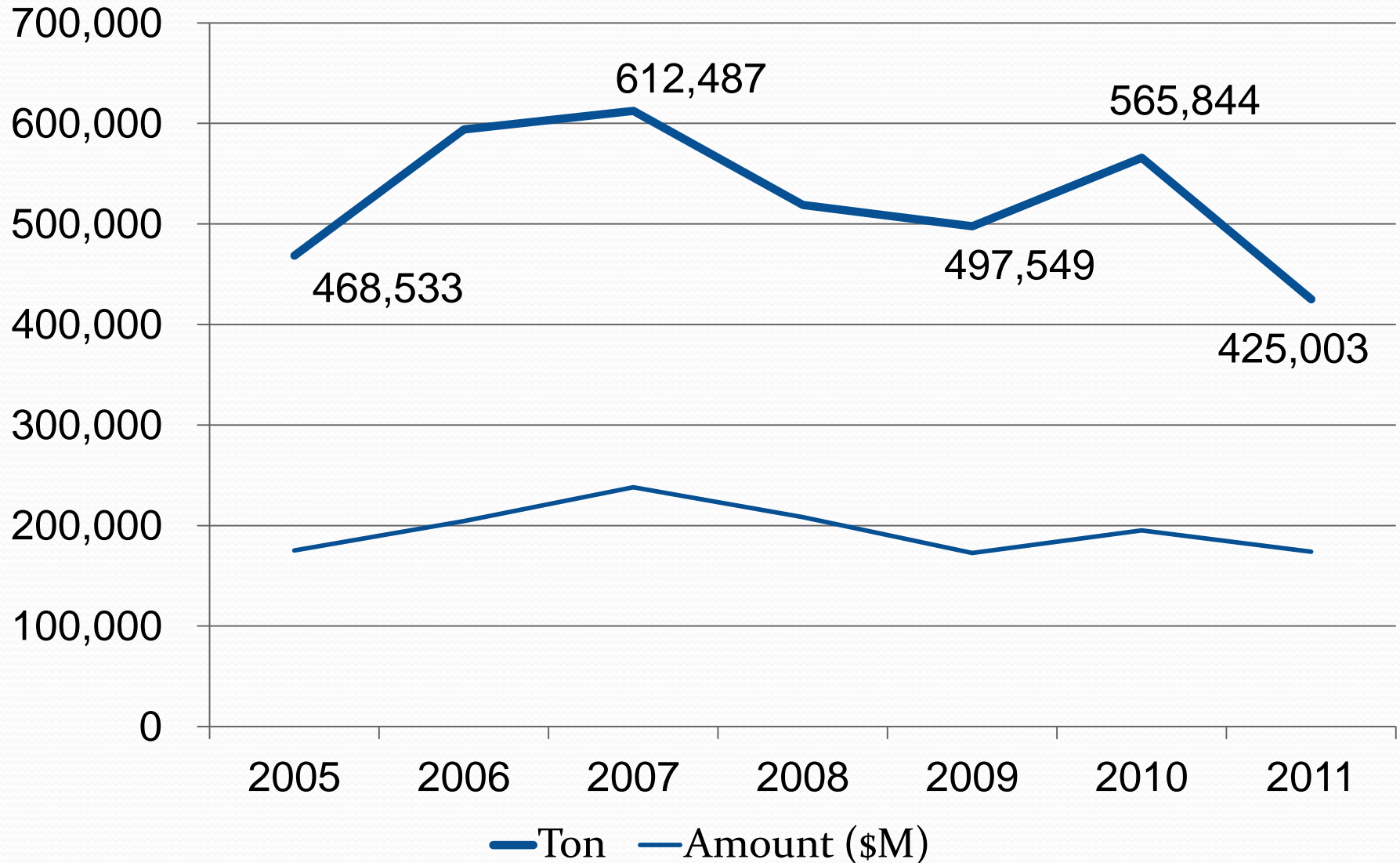
(unit: Ton)



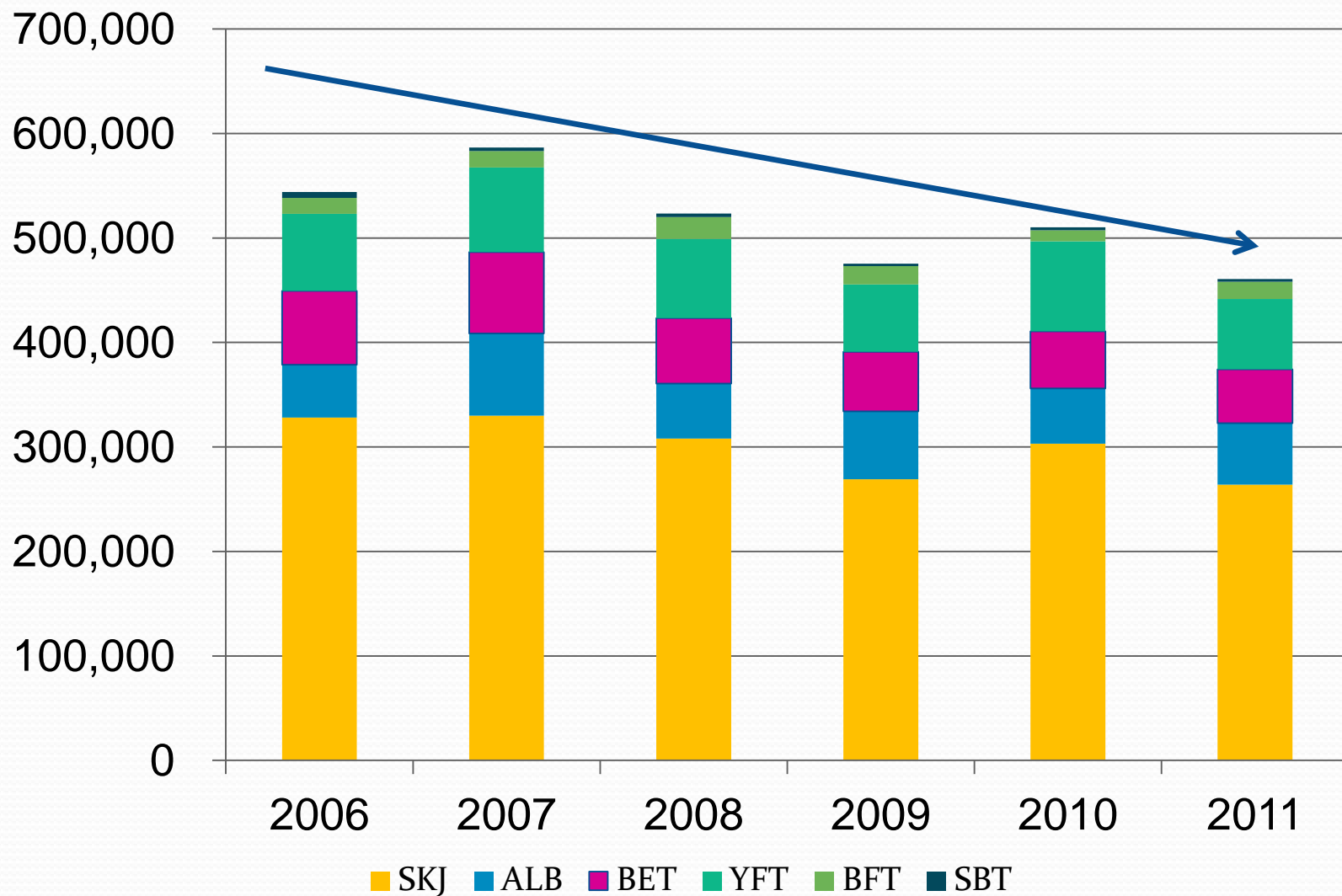
All Marine Products, Import of Japan



All Marine Products, Export of Japan



Capture production by Species (Unit Ton)

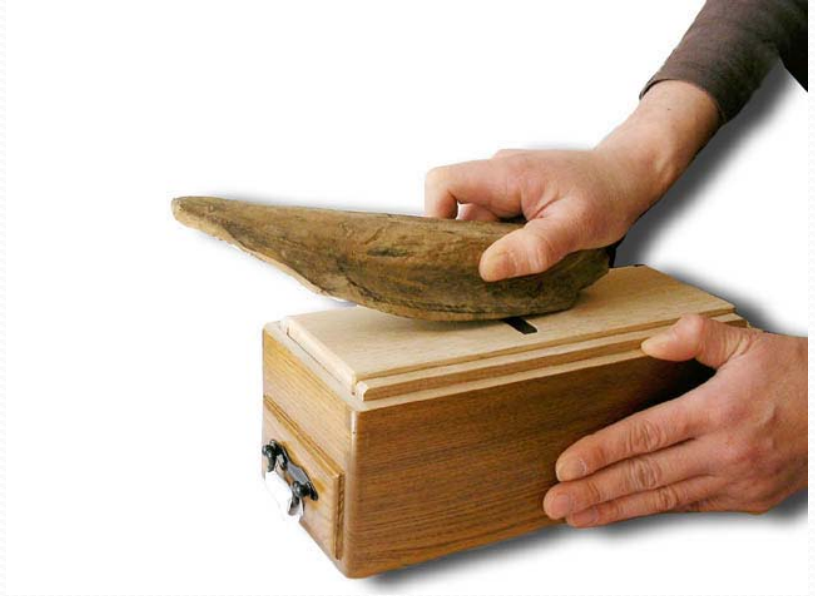


Main use of JPN Purse Seiner's catch



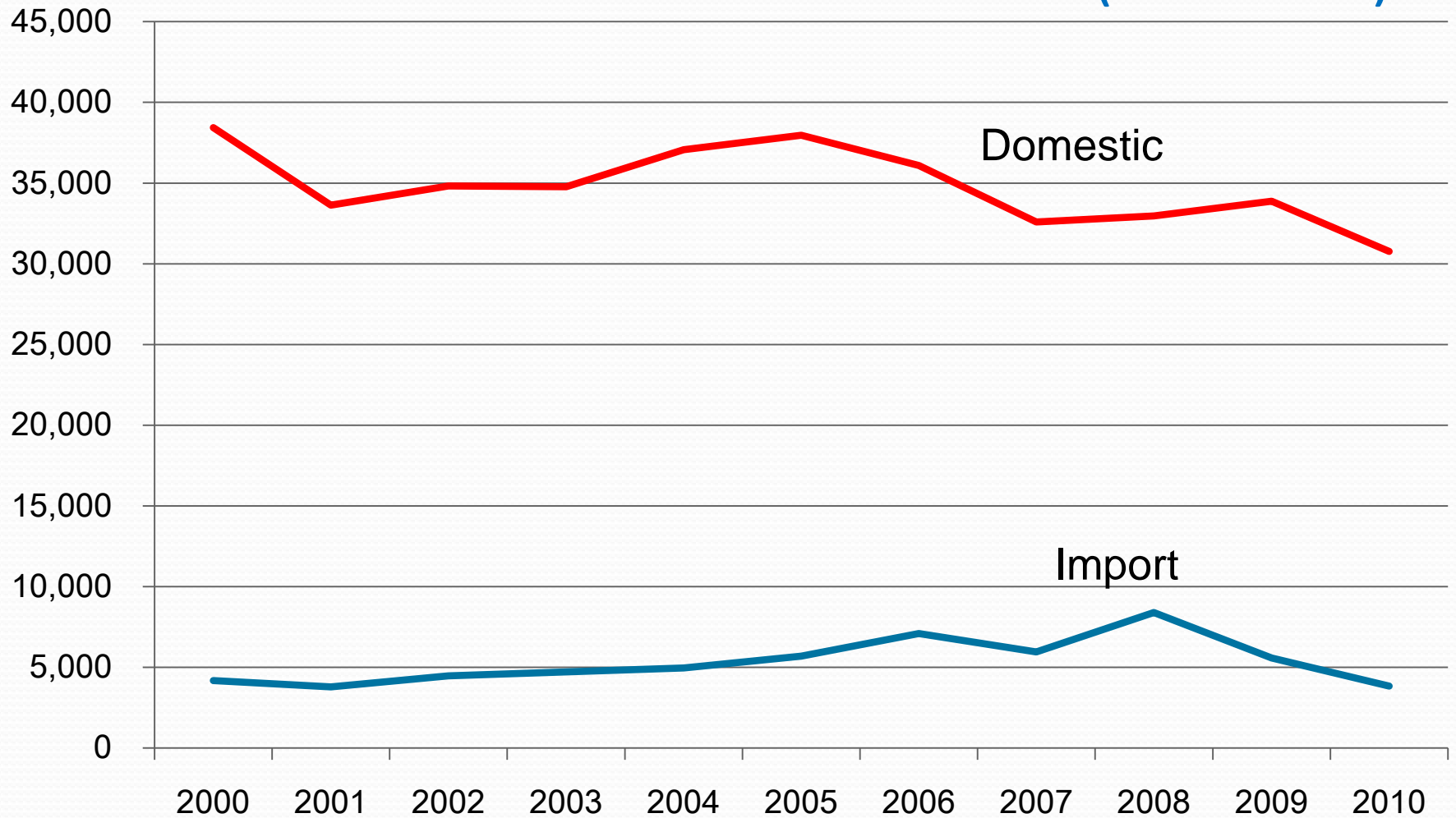
Katsuobushi
Canned
Sashimi
Tataki
Delicacies
Export

Katsuobushi is very important for making stock and fish essence to Japanese traditional diet.



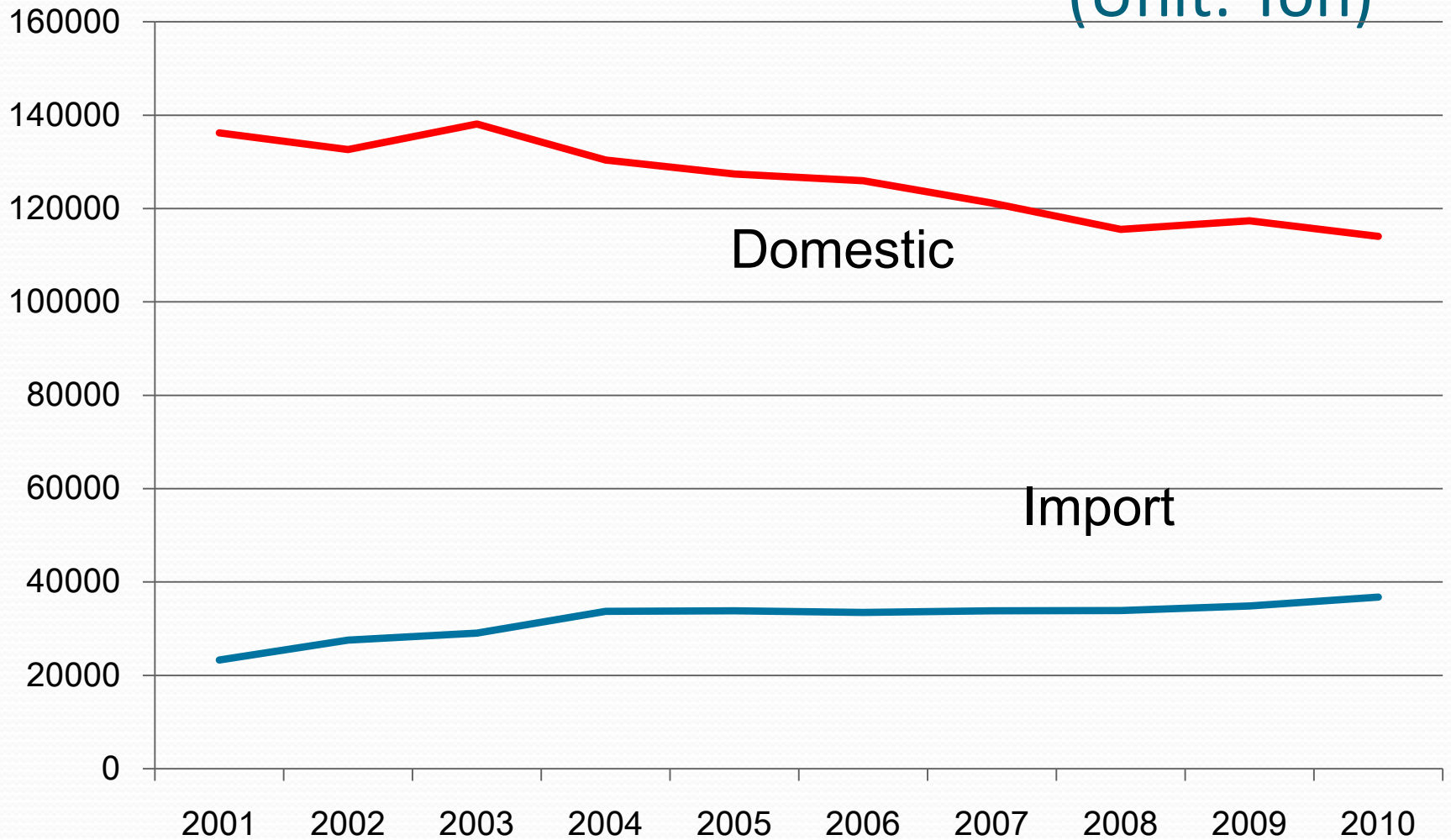
Trend of KATSUOBUSHI production

(Unit: Ton)

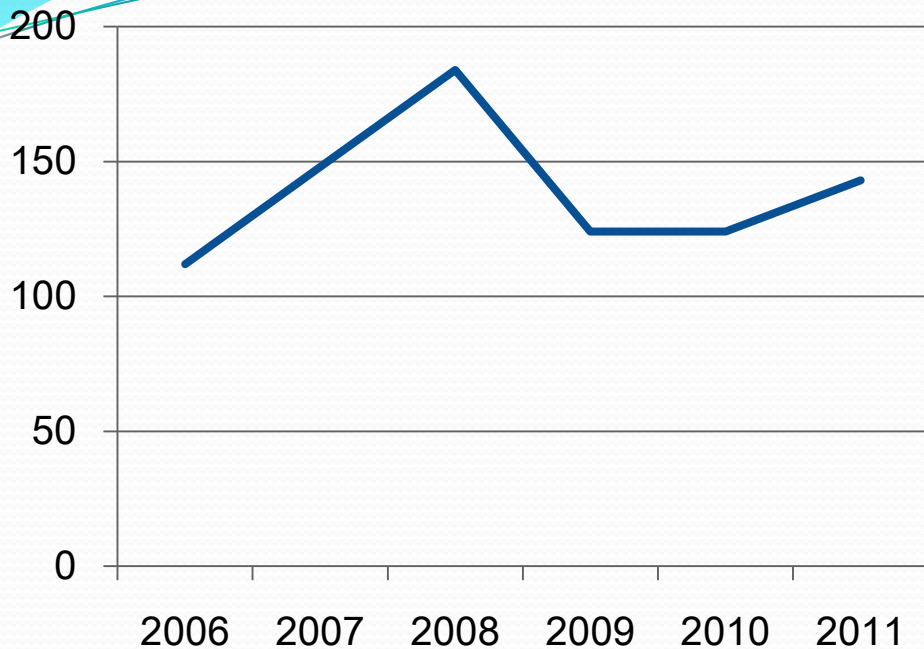


Trend of canned tuna production

(Unit: Ton)

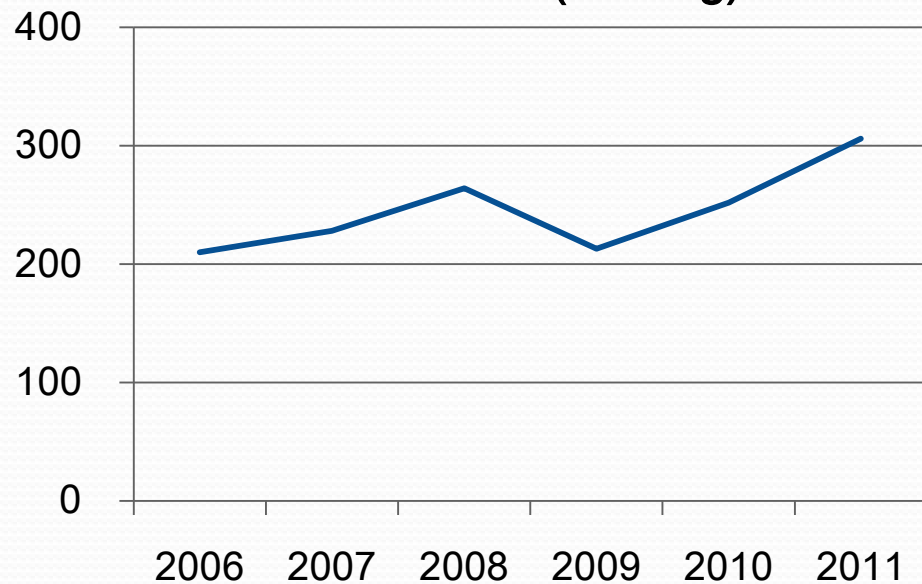


Price trend **SKJ** (Yen/Kg)



Price trend
by species
in Japan

Price trend **YFT** (Yen/Kg)



Class consciousness change in Japan

Early 2000

Present

High Class Life Level

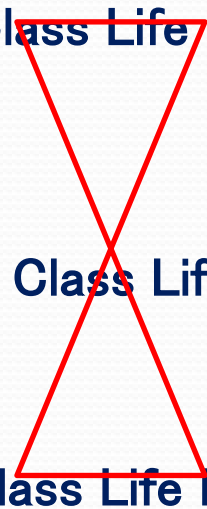
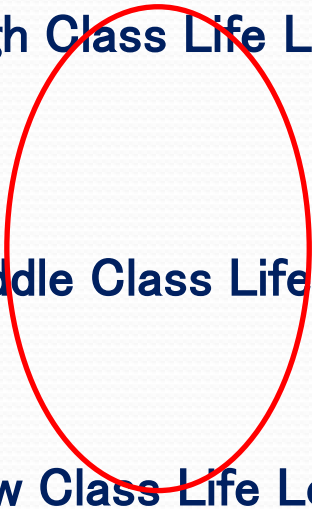
High Class Life Level

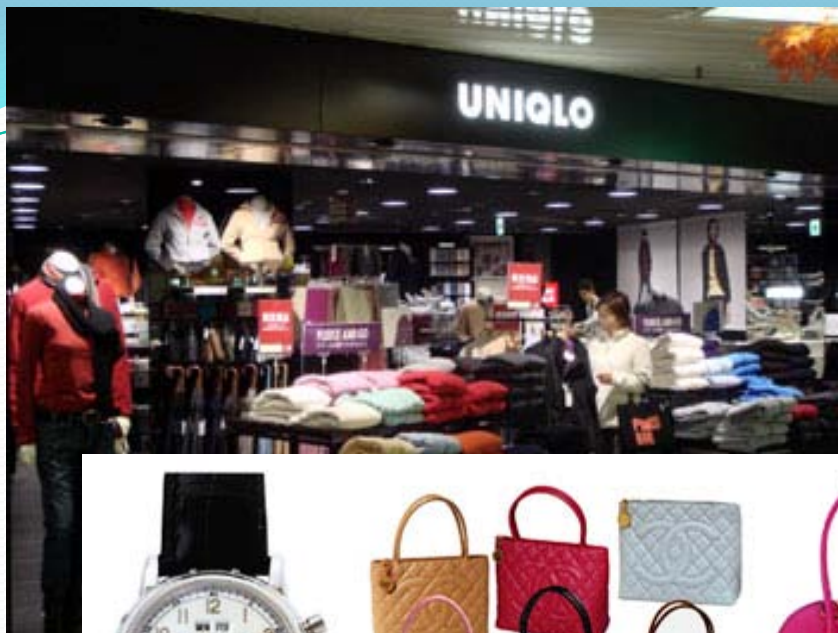
Middle Class Life Level

Middle Class Life Level

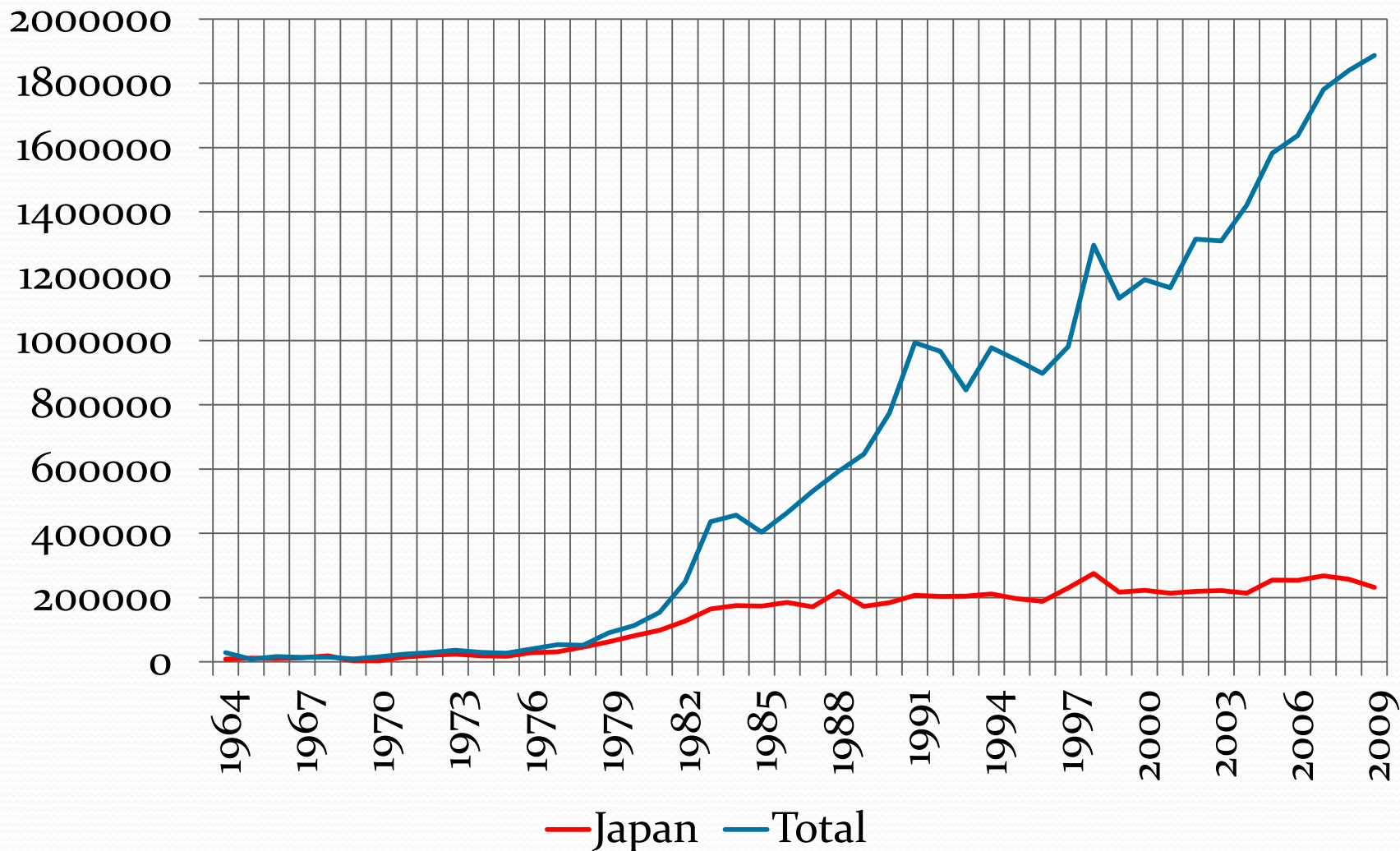
Low Class Life Level

Low Class Life Level

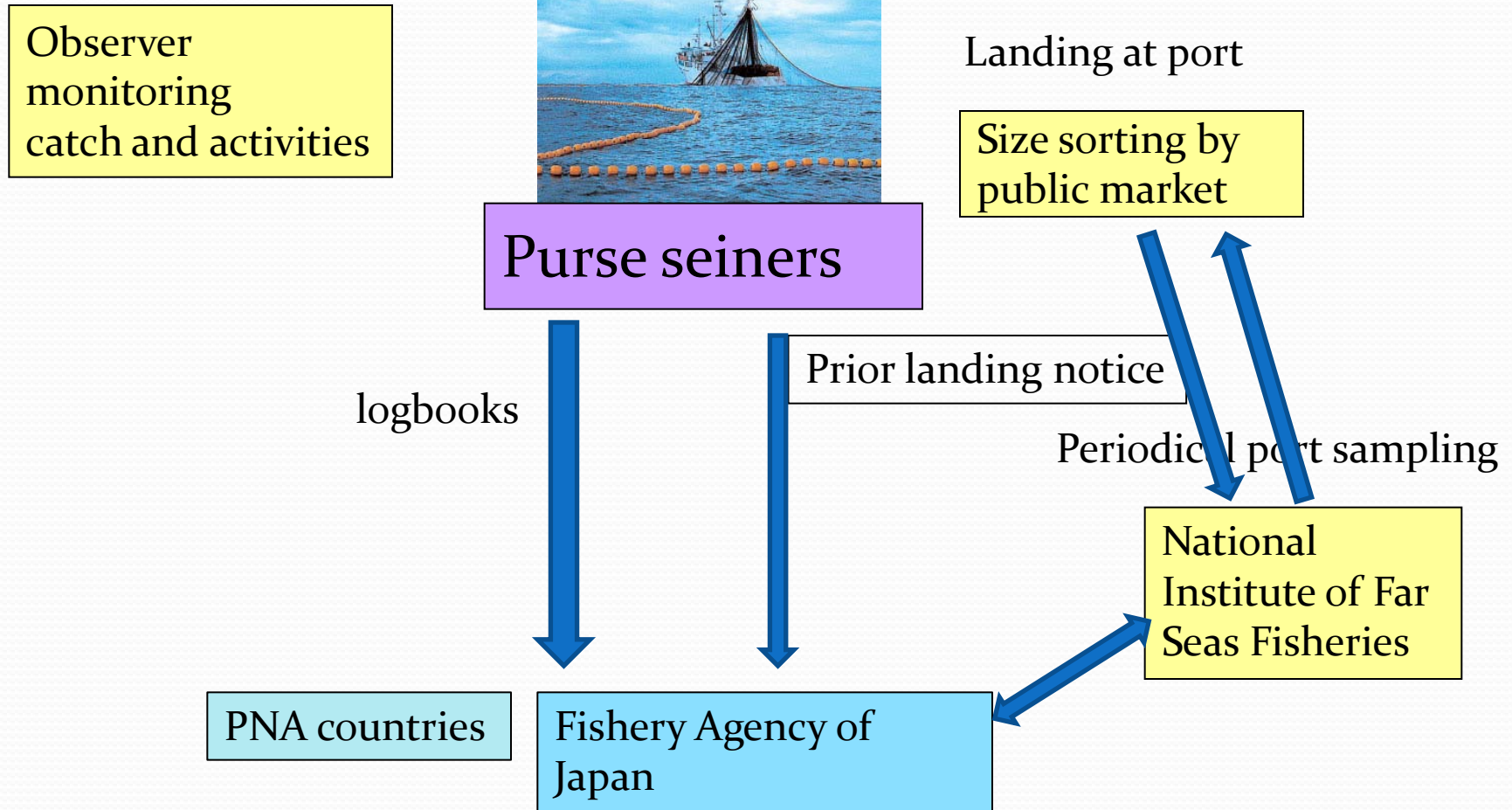




Total and Japanese Purse Seine Catch in WCP Convention Area



Monitoring Bigeye catch by JPN PS fleet



Reduction of by-catch of juvenile bigeye tuna

- (2001-2004 average/ 6,634 tons)
 - Targeted catch, 30% reduction from 6,634 tons to 4,644 tons over three years.
 - Achieved in 2011 3,843 tons (-49.2%)

Researches for mitigating small BET bycatch by Fisheries Research Agency (FRA)

- Objective : Need for effective methods to mitigate small BET bycatch around FADs while keeping SKJ catch
- Scientific Research Cruises have been conducted by FRA in cooperation with Fishery sector
- Method to push small BET to wide mesh section of the net using light stimulus (intermittent flash light).

Thank you.

