

DEVELOPING POLE-AND-LINE FISHERIES IN A SUSTAINABLE AND RESPONSIBLE WAY - TO THE BENEFIT OF COASTAL COMMUNITIES WORLDWIDE



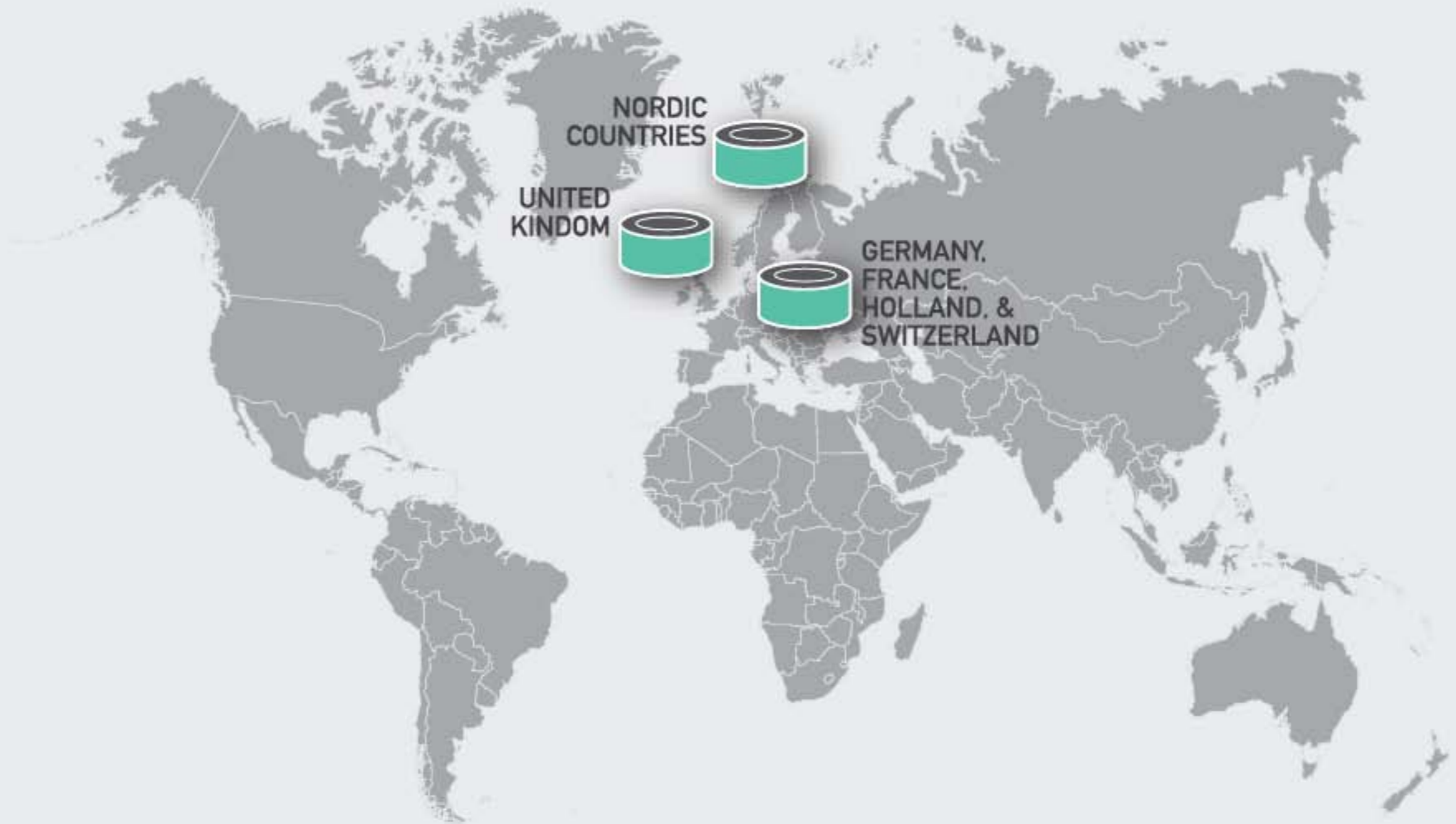
IPNLF
INTERNATIONAL POLE
& LINE FOUNDATION



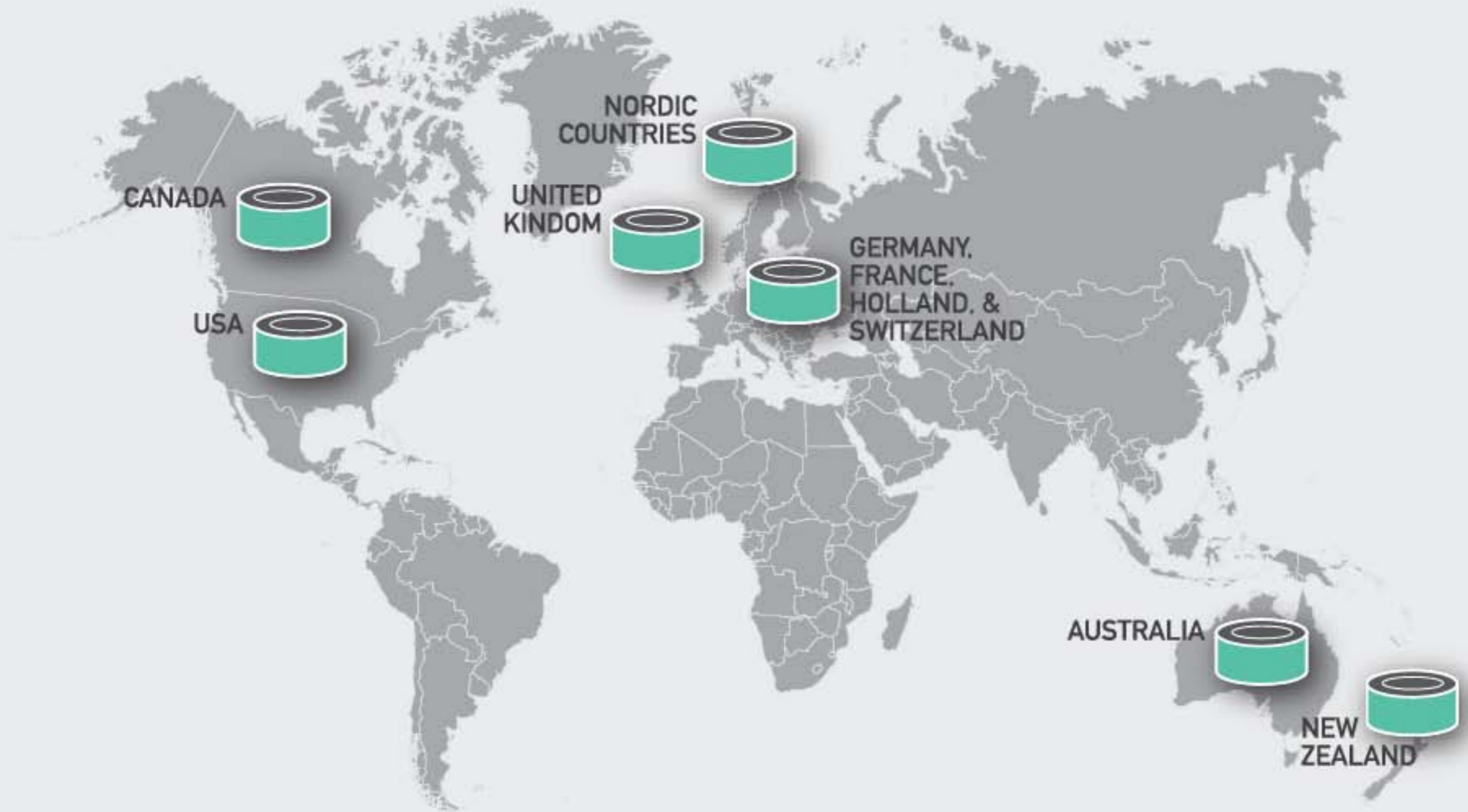
COUNTRIES WITH INTEREST



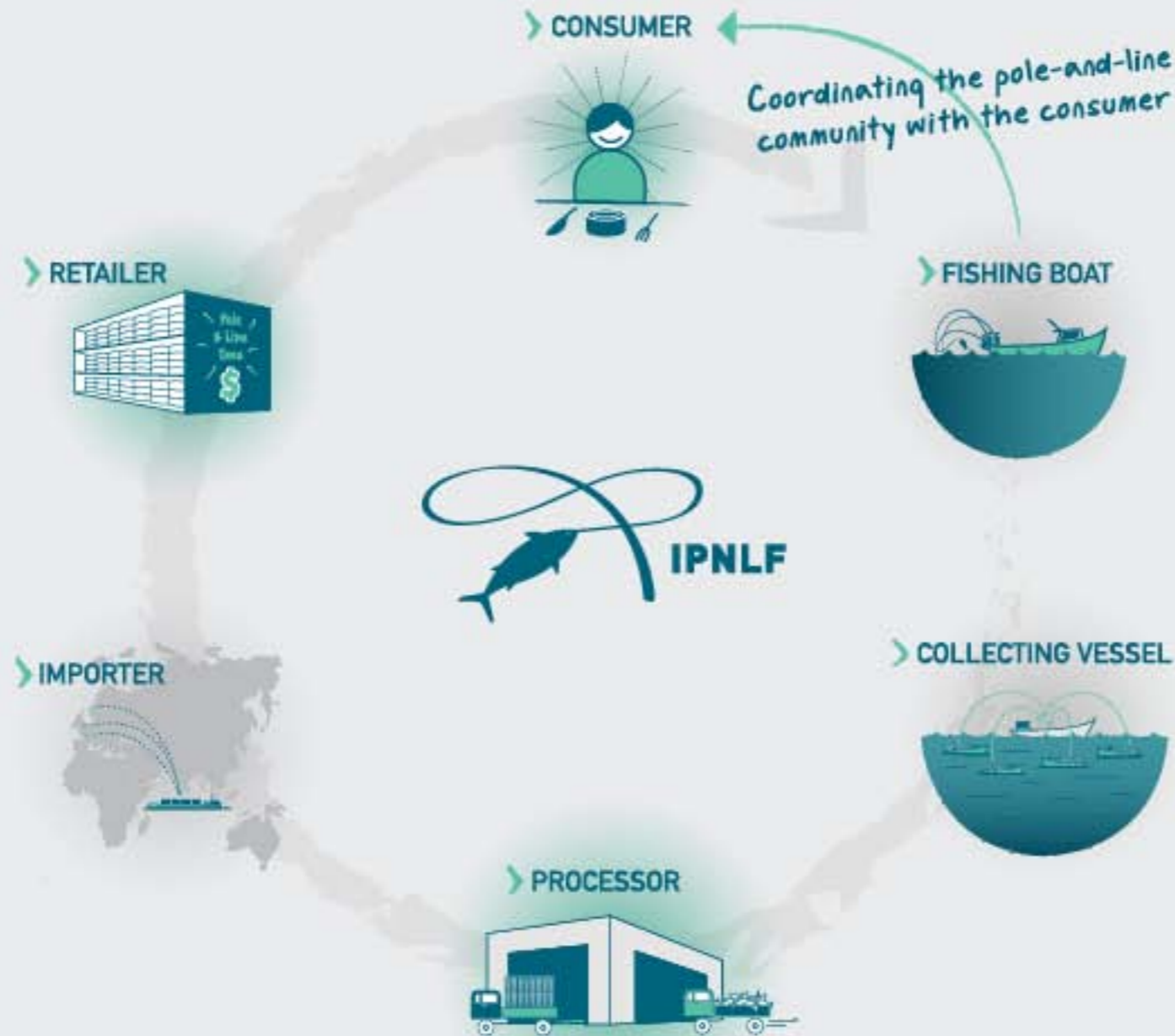
COUNTRIES WITH INTEREST

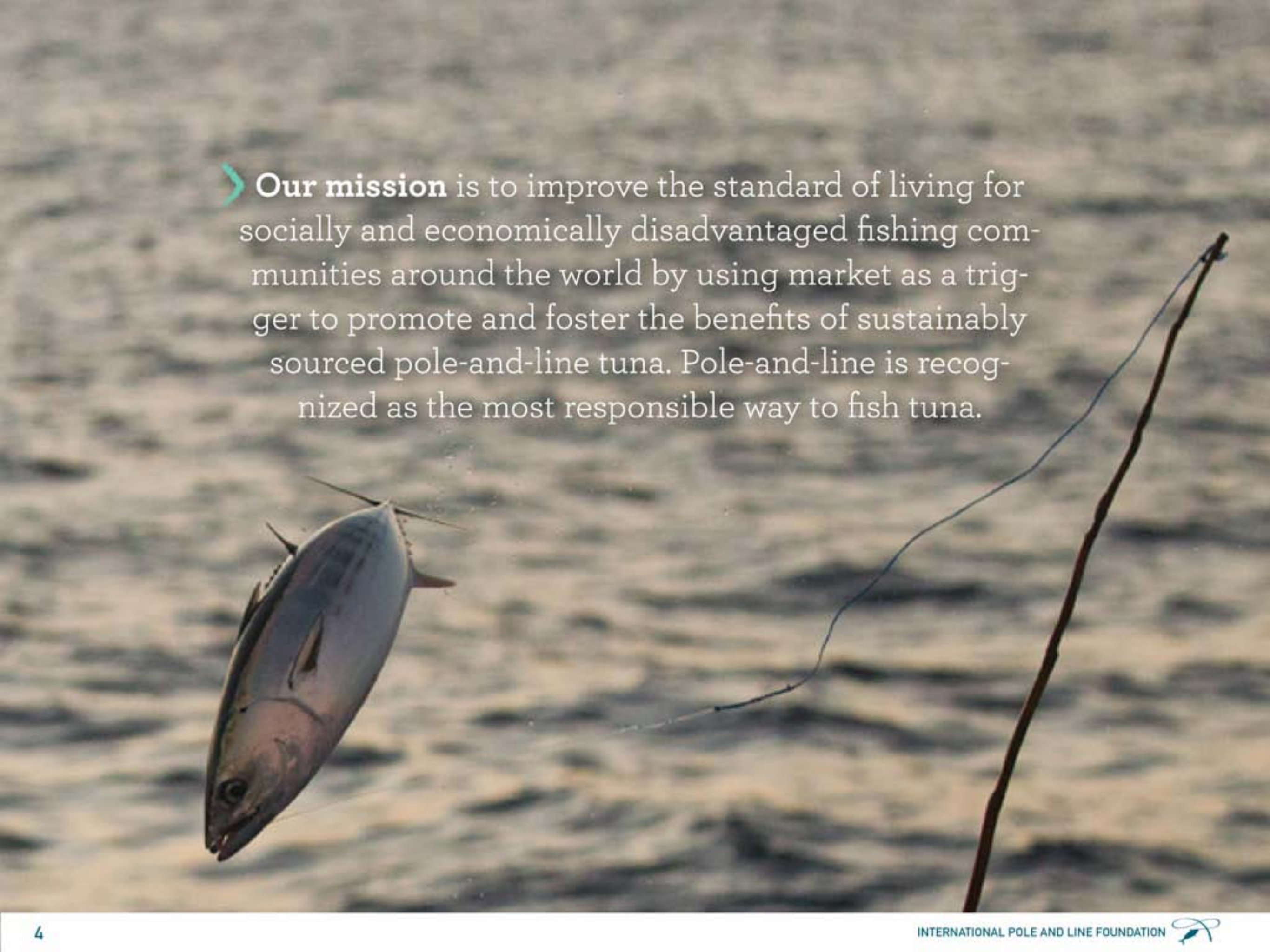


COUNTRIES WITH INTEREST



- Coordinating the increase in demand of pole-and-line caught tuna with the supply is necessary to avoid the issues of over-capacity in the fishery.



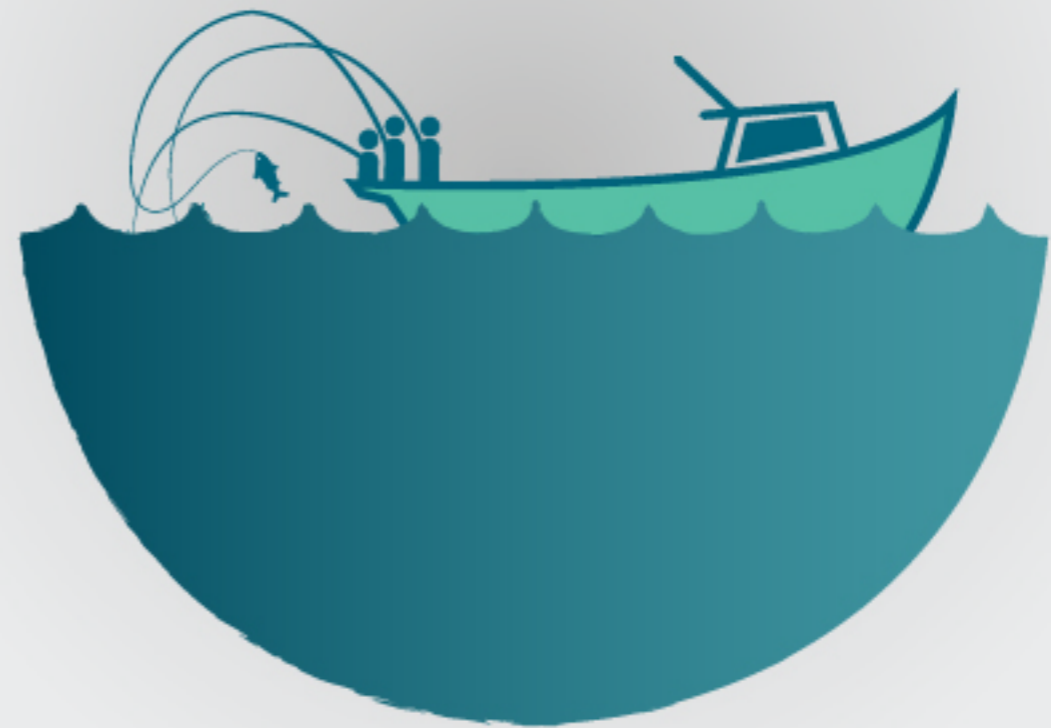


› **Our mission** is to improve the standard of living for socially and economically disadvantaged fishing communities around the world by using market as a trigger to promote and foster the benefits of sustainably sourced pole-and-line tuna. Pole-and-line is recognized as the most responsible way to fish tuna.



Pole-and-line is the most sustainable method of fishing

- Fishing is highly selective
- No by-catch; does not harm sharks, turtles, whales, or dolphins.
- No DISCARDS



➤ Maldives livebait pole-and-line fishery



A rich tradition and culture
dating back 800+ years

MALDIVES POLE-AND-LINE FISHERY

- Pole-and-line fisheries create local employment and distribute income at the community level, alleviating poverty and improving livelihoods with increasing disposal income



MALDIVES POLE-AND-LINE FISHERY

- Pole-and-line fisheries create local employment and distribute income at the community level, alleviating poverty and improving livelihoods with increasing disposal income

MALDIVES

- Prior to 1960s Maldives pole-and-line catch represented ~ 80-90% of total IO catch



MALDIVES POLE-AND-LINE FISHERY

- Pole-and-line fisheries create local employment and distribute income at the community level, alleviating poverty and improving livelihoods with increasing disposal income

MALDIVES

- Prior to 1960s Maldives pole-and-line catch represented ~ 80-90% of total IO catch

- 30,000 people employed;
15,000 in harvesting sector,
15,000 in post-harvesting sector



MALDIVES POLE-AND-LINE FISHERY

- Pole-and-line fisheries create local employment and distribute income at the community level, alleviating poverty and improving livelihoods with increasing disposal income

MALDIVES

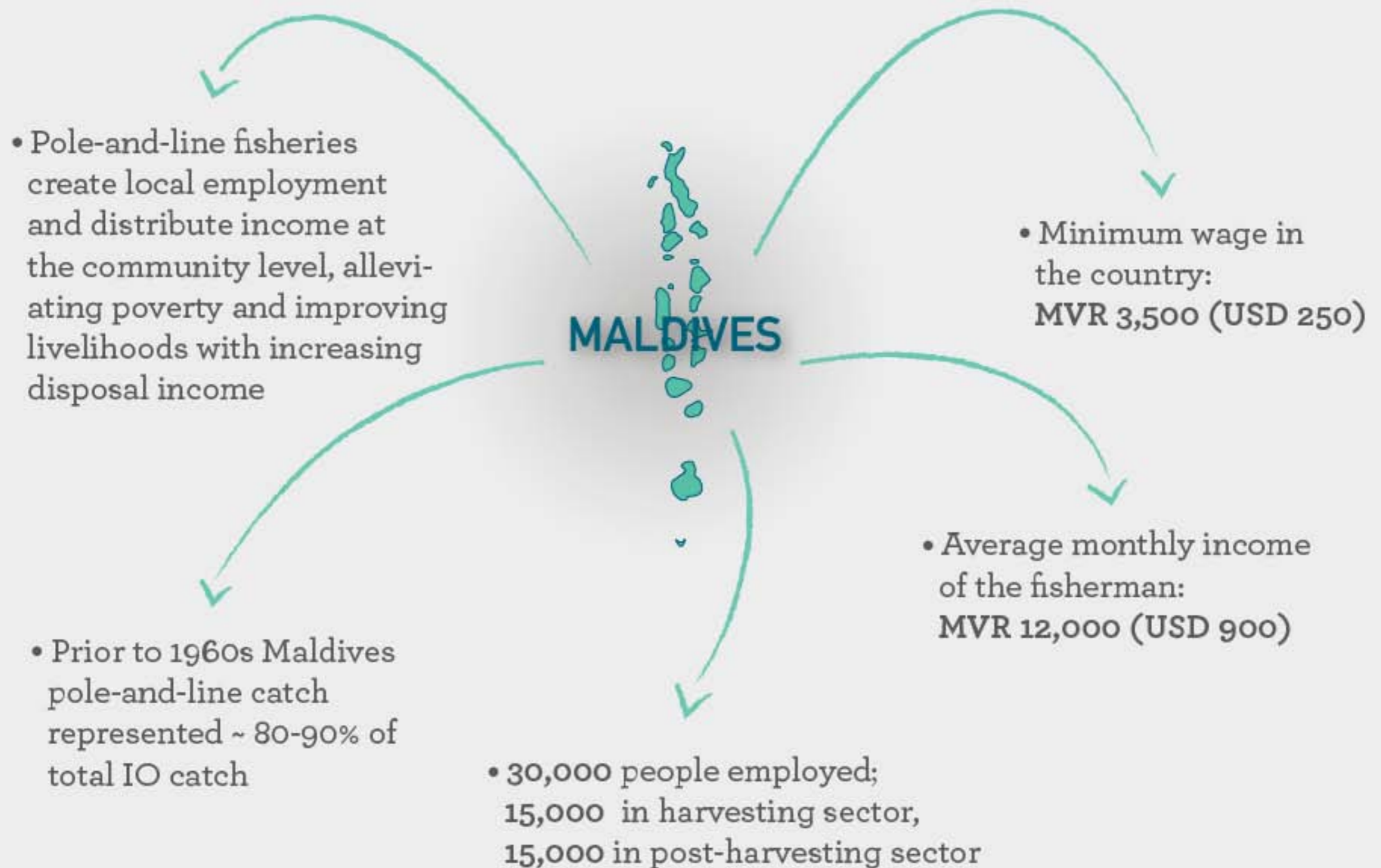
- Prior to 1960s Maldives pole-and-line catch represented ~ 80-90% of total IO catch

- 30,000 people employed;
15,000 in harvesting sector,
15,000 in post-harvesting sector

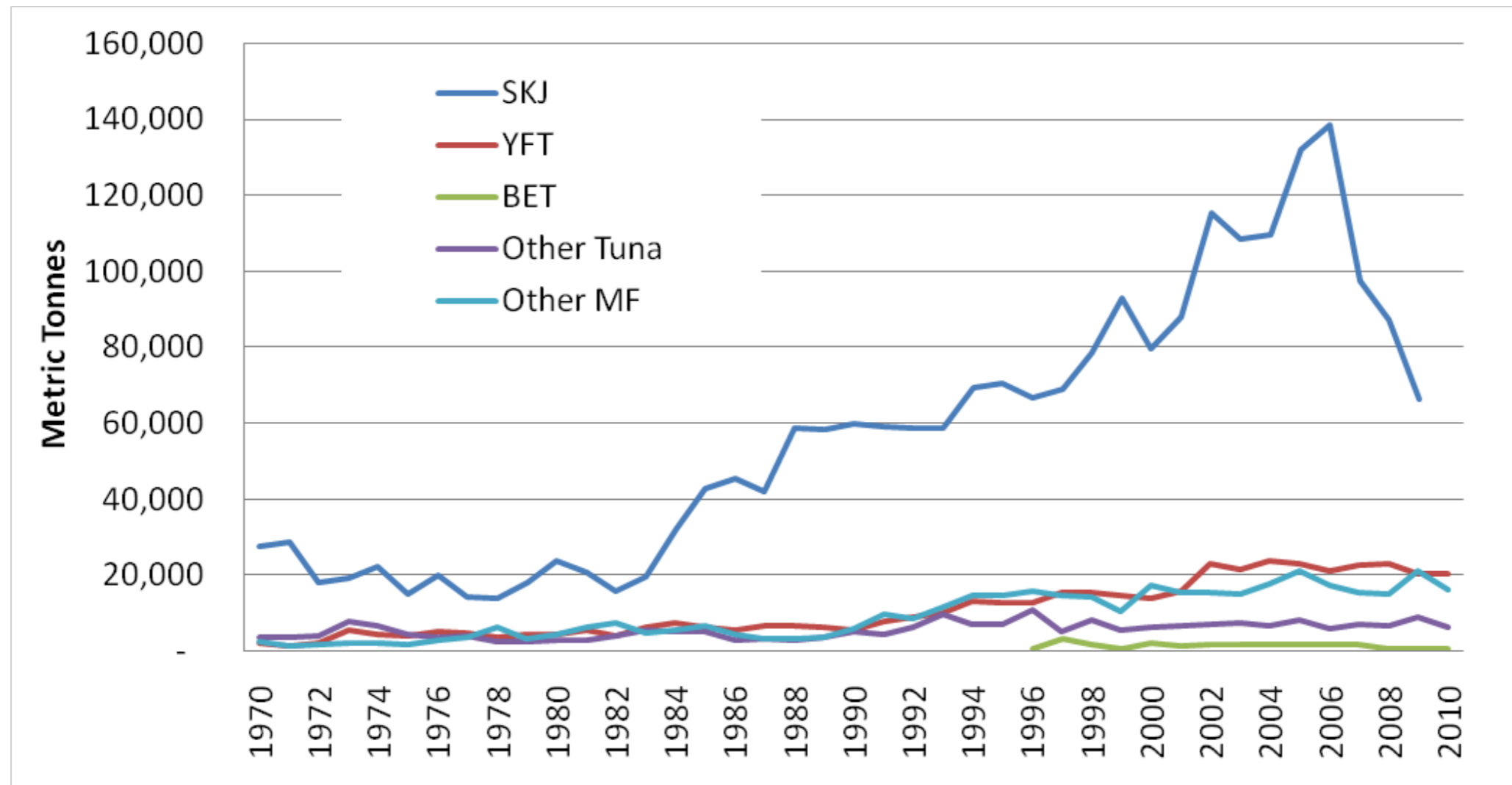
- Average monthly income of the fisherman:
MVR 12,000 (USD 900)



MALDIVES POLE-AND-LINE FISHERY



TUNA PRODUCTION – MALDIVES



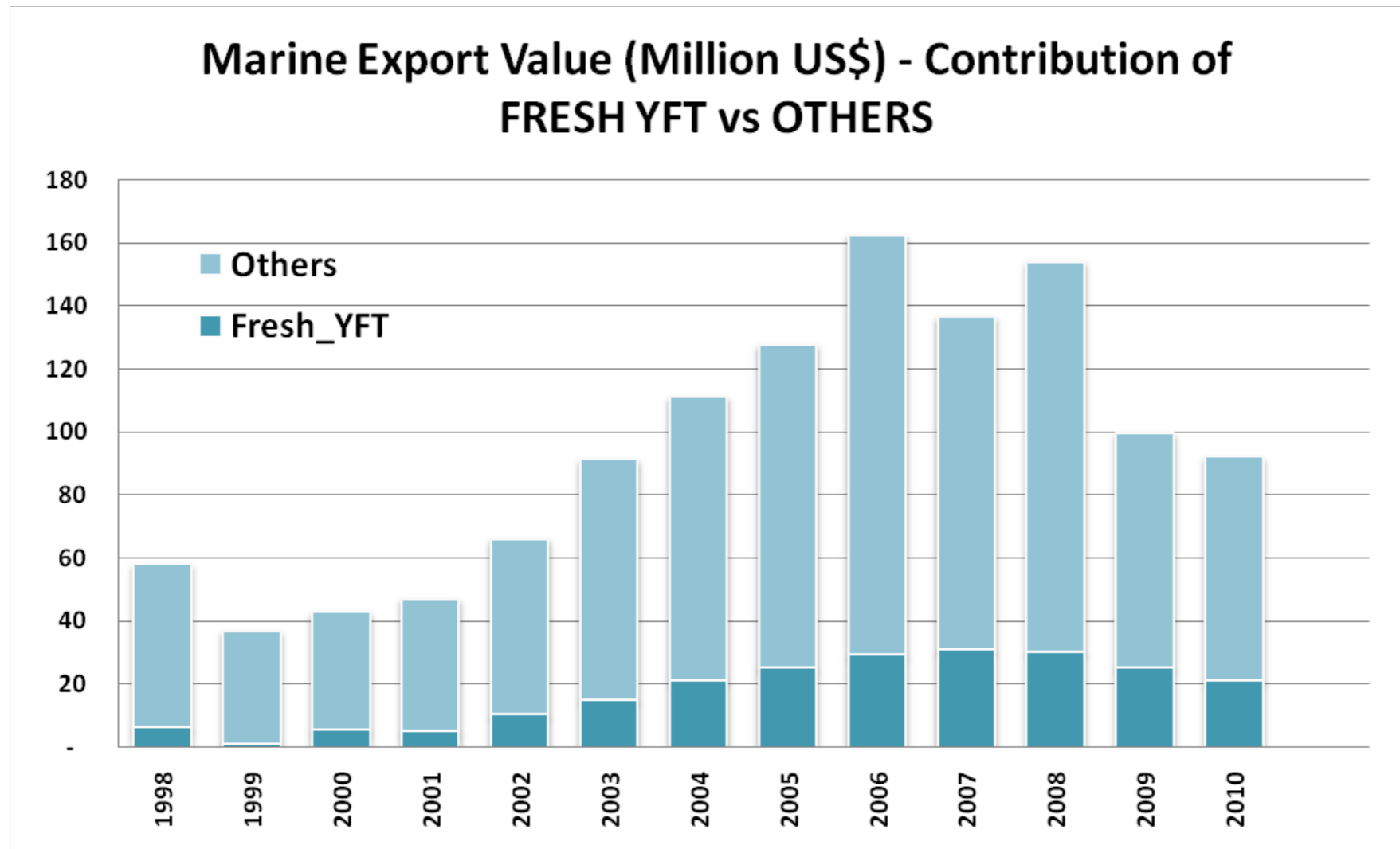
➤ Rapid increase in catch following motorization in 1970's

➤ Widespread purse seining in WIO in mid 1980's

➤ Maldives SKJ catch – all time record high 140,000 mt in 2006; dropped to ~ 50,000 mt in 2010



ADDED VALUE OF HANDLINE CAUGHT YELLOWFIN



➤ Handline caught YFT contributes ~ 30% of total marine export value

➤ Represents about 4000-5000 mt of processed weight

➤ That is ~ 8000 mt fresh weight

STIMULATING DEMAND

- Identify market alignments;
- leverage market support and awareness



STIMULATING DEMAND

- Identify market alignments;
- leverage market support and awareness



PRODUCER BENEFITS & SUPPORT

- Encourage buyers to make long term commitments;
- Facilitate capacity building, improve knowledge & business literacy transfer



STIMULATING DEMAND

- Identify market alignments;
- leverage market support and awareness



PRODUCER BENEFITS & SUPPORT

- Encourage buyers to make long term commitments;
- Facilitate capacity building, improve knowledge & business literacy transfer

- Work with public and private sector to nurture management capacity;
- Commission research and engage with academia

MANAGEMENT & SCIENTIFIC RESEARCH



THE ROAD AHEAD!

The Foundation has recently been formed; very much encouraged by the support received so far.

Recognized necessary improvements:

- Management of livebait fishery
- Improving post-harvest handling – Minimizing waste
- Supporting data collection and research
- Assisting to achieve sustainability and environmental certification





**THANK YOU FOR
YOUR ATTENTION!**

